

Administrative Group



[1]

[Harrison Krance](#) [1] Desktop Support Analyst

Pronouns: He/him/his

Joined Campus Health: August 2021

Professional/Educational Background: Harrison graduated from the School of Audio Engineering in New York. He was head engineer at the Comedy Cellar and IT Technician at Kenan-Flagler Business School.

BIO [1] kranceh@email.unc.edu [2]



[3]

[Melody Gibson, RHIA](#) [3] Health Information Manager/Privacy Officer

Melody graduated from East Carolina University with a major in Health Information Management, and has been employed at Campus Health since 2001.

BIO [3] mjgibson@email.unc.edu [4]



[5]

[Nina R. James](#) [5] Administrative Manager

Professional/Educational Background: B.S. in Public Administration from CUNY. Nina came to North Carolina from New York City where she had over 20 years of Healthcare experience both at The Brooklyn Hospital, and for the State of New York, in the department of Cardiology.

[BIO](#) [5] ninaj@email.unc.edu [6]



[7]

[Alda Alfaro](#) [7] Health Information Specialist

[BIO](#) [7]



[8]

[Stephen Allen](#) [8] Systems Analyst

Professional/Educational Background: He has been working in IT since 2010 and has a Master's in Network Technology from ECU.

Originally from: Greenville, NC

Family: Stephen and his wife Krysta have a son born in 2018.

[BIO \[8\] allenstg@email.unc.edu \[9\]](mailto:allenstg@email.unc.edu)



[10]

[Nakia Atkins \[10\]](#) Patient Accounts Representative

Joined Campus Health: October 2020

Professional/Educational Background: Nakia received her BA from North Carolina Central University

Originally from: Nakia is from Durham, NC

Family: She has two sons, Janssen Jr. and Jysson.

[BIO \[10\] monike@email.unc.edu \[11\]](mailto:monike@email.unc.edu)



[12]

[Mary Balcita \[12\]](#) Health Information Specialist

Professional/Educational Background: Mary has a BSBA in Accounting.

Joined Campus Health: 2018

Originally from: Raleigh, NC

Family: Mary is married with two adult children.

[BIO \[12\] mbalcita@email.unc.edu \[13\]](mailto:mbalcita@email.unc.edu)



[14]

[Andrew Brennick](#) [14] Admin Support Supervisor

Originally from: Andrew is originally from California but he moved to Florida when he was 12.

Professional/Educational Background: Andrew received his Bachelor's degree in Psychology.

Joined Campus Health: Summer 2018

[BIO](#) [14] andrewbr@email.unc.edu [15]



[16]

[Becca Cheng](#) [16] Technology Support Analyst

Originally from: Becca has lived all over the southeast but most recently out of Virginia (10 years ago)

Joined Campus Health: October 2020

Family: Her dad lives here as well, and her mom is in Atlanta.

[BIO](#) [16] rcheng@email.unc.edu [17]



[18]

[Scott Christner](#) [18] IT Project Manager
[BIO](#) [18]



[19]

[Frances Coombs](#) [19] Housekeeper
[BIO](#) [19]



[20]

[Sarah Derber](#) [20] Accounting Technician

Sarah joined Campus Health in January of 2015, she's originally from State College, PA. She was a Financial Assistant with Penn State University for 27 years. Sarah is a voracious reader and is looking forward to learning how to kayak.

[BIO](#) [20]



[21]

[Lawrence Gaskin](#) [21] Housekeeper
BIO [21]



[22]

[Aaron Hoff](#) [22] Patient Access and Billing Supervisor

Professional/Educational Background: nearly 20 years in medical billing and revenue cycle management.

Originally from: Omaha, NE

Joined Campus Health: July, 2013

Family: has two children

Favorite book/movie: Favorite book is ?Ask the Dust? by John Fante

BIO [22] athoff@email.unc.edu [23]



[24]

[Shaku Jayaram](#) [24] Processing Assistant

Originally from: India

Professional/Educational Background: Bachelors in Economics and Masters in Kannada Literature from University of Mysore, India.

Joined Campus Health: 2009

[BIO](#) [24] sjayaram@email.unc.edu [25]



[26]

[Aaron Majcen](#) [26] Human Resources

[BIO](#) [26]



[27]

[Ryan Meehan](#) [27] Environment of Care Manager

Originally from: Amityville, New York. A South Shore town on Long Island.

[BIO](#) [27] rmeehan@email.unc.edu [28]



[29]

[Kathy Mills](#) [29] Executive Assistant, Travel Clinic Coordinator

Professional/Educational Background: Worked as Administrative Assistant for almost 20 years prior to Campus Health

Joined Campus Health: October 2014

Originally from: Born in Charlotte NC, raised in Southwestern Michigan

Family: A daughter studying at ECU

[BIO](#) [29]



[30]

[Angela Pierce](#) [30] Admin Support Associate

Originally from: Angela was born in Harnett county, NC and moved to Orange County, NC when she was 12 years old.

Professional/Educational Background: She is currently pursuing a Bachelor's degree in business administration at Liberty University.

[BIO](#) [30] angela91@email.unc.edu [31]



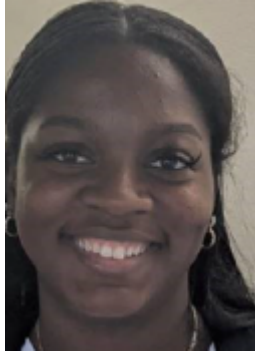
[32]

[Chance Robinson](#) [32] Storeroom Manager

Originally from: Chance is originally from New Mexico, but he has lived in North Carolina for 18 years now.

Joined Campus Health: January 2020

BIO [32] chancel@ad.unc.edu [33]



[34]

[Tameiah Ross](#) [34] Contact Tracer

Originally from: Tameiah is from Carthage, NC.

Joined Campus Health: Fall 2020

Family: Her family includes her mom, dad, 3 brothers, 1 sister, 2 nieces, and 2 nephews.

Professional/Educational Background: Tameiah has a Bachelor's in Public Health.

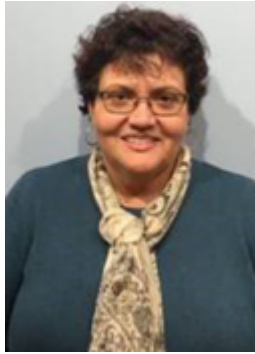
BIO [34] tameiahr@email.unc.edu [35]



[36]

[Kathy Scurlock](#) [36] Patient Financial Specialist (Referrals)

BIO [36] k_scurlock@unc.edu [37]



[38]

[Janice Singletary](#) [38] Business Services Manager

Originally from: Janice is originally from Burlington, NC

Professional/Educational Background: Janice attended NC State and graduated from Elon. She started with the Student Affairs Office of the Vice Chancellor Finance Hub in 2016

Joined Campus Health: March 2019

[BIO](#) [38] janicejs@email.unc.edu [39]



[40]

[Sara Stahlman](#) [40] Marketing and Communication Coordinator

Sara coordinates Campus Health marketing and communication initiatives including the Healthy Heels social media channels.

[BIO](#) [40]



[41]

[Catherine Swinney](#) [41] Accounting Technician

Catherine has been with Campus Health since coming to the University in 1988. She has worked in her current position, Accounts Payable/Purchasing Agent, for the last 15 years. She is a native of Alamance County, North Carolina and a graduate of Cummings High School in Burlington.

[BIO](#) [41]



[42]

[Chris Van Vleek](#) [42] Insurance Coordinated

Started at Campus Health: 2012

[BIO](#) [42]



[43]

[Vicki Warwick](#) [43] Insurance Associate

Vicki has worked in the health field for more than 10 years. She started as a Chiropractic Assistant working with patients doing therapies and taking x-rays.

[BIO](#) [43] vwarwick@email.unc.edu [44]



[45]

[Heather Woodie](#) [45] Health Information Specialist
[BIO](#) [45]

Source URL: <https://campushealth.unc.edu/about-us/our-staff/department/Administrative-Group>

Links

- [1] <https://campushealth.unc.edu/about-us/our-staff/harrison-krance>
- [2] <mailto:kranceh@email.unc.edu>
- [3] <https://campushealth.unc.edu/about-us/our-staff/melody-gibson-rhia>
- [4] <mailto:mgibson@email.unc.edu>
- [5] <https://campushealth.unc.edu/about-us/our-staff/nina-r-james>
- [6] <mailto:ninaj@email.unc.edu>
- [7] <https://campushealth.unc.edu/about-us/our-staff/alda-alfaro>
- [8] <https://campushealth.unc.edu/about-us/our-staff/stephen-allen>
- [9] <mailto:allenstg@email.unc.edu>
- [10] <https://campushealth.unc.edu/about-us/our-staff/nakia-atkins>
- [11] <mailto:monike@email.unc.edu>
- [12] <https://campushealth.unc.edu/about-us/our-staff/mary-balcita>
- [13] <mailto:mbalcita@email.unc.edu>
- [14] <https://campushealth.unc.edu/about-us/our-staff/andrew-brennick>
- [15] <mailto:andrewbr@email.unc.edu>
- [16] <https://campushealth.unc.edu/about-us/our-staff/becca-cheng>
- [17] <mailto:rcheng@email.unc.edu>
- [18] <https://campushealth.unc.edu/about-us/our-staff/scott-christner>
- [19] <https://campushealth.unc.edu/about-us/our-staff/frances-coombs>
- [20] <https://campushealth.unc.edu/about-us/our-staff/sarah-derber>
- [21] <https://campushealth.unc.edu/about-us/our-staff/lawrence-gaskin>
- [22] <https://campushealth.unc.edu/about-us/our-staff/aaron-hoff>
- [23] <mailto:athoff@email.unc.edu>
- [24] <https://campushealth.unc.edu/about-us/our-staff/shaku-jayaram>
- [25] <mailto:sjayaram@email.unc.edu>
- [26] <https://campushealth.unc.edu/about-us/our-staff/aaron-majcen>
- [27] <https://campushealth.unc.edu/about-us/our-staff/ryan-meehan>

- [28] <mailto:rmeehan@email.unc.edu>
- [29] <https://campushealth.unc.edu/about-us/our-staff/kathy-mills>
- [30] <https://campushealth.unc.edu/about-us/our-staff/angela-pierce>
- [31] <mailto:angela91@email.unc.edu>
- [32] <https://campushealth.unc.edu/about-us/our-staff/chance-robinson>
- [33] <mailto:chancel@ad.unc.edu>
- [34] <https://campushealth.unc.edu/about-us/our-staff/tameiah-ross>
- [35] <mailto:tameiahr@email.unc.edu>
- [36] <https://campushealth.unc.edu/about-us/our-staff/kathy-scurlock>
- [37] mailto:k_scurlock@unc.edu
- [38] <https://campushealth.unc.edu/about-us/our-staff/janice-singletary>
- [39] <mailto:janicejs@email.unc.edu>
- [40] <https://campushealth.unc.edu/about-us/our-staff/sara-stahlman>
- [41] <https://campushealth.unc.edu/about-us/our-staff/catherine-swinney>
- [42] <https://campushealth.unc.edu/about-us/our-staff/chris-van-vleek>
- [43] <https://campushealth.unc.edu/about-us/our-staff/vicki-warwick>
- [44] <mailto:vwarwick@email.unc.edu>
- [45] <https://campushealth.unc.edu/about-us/our-staff/heather-woodie>